

2020

HEADLAMPS



**PETZL**®



Maintenance inside a water treatment facility  
© 2019 - Petzl Distribution - Vuedici.org

# Access the inaccessible®

Over forty years ago, Petzl created the first headlamp that fit "all-on-the-head", including the battery pack. It was an innovation that kept users' hands free for efficient and safe activity in dark environments. Since then, Petzl headlamps have become the ultra-performance, hands-free lighting solution for professionals, from artisans to those working in confined and hazardous spaces. Petzl's objective is to design the most efficient lighting solutions for all. When you choose a Petzl headlamp, you are choosing a work tool guaranteed to be reliable and durable, practical and comfortable, to help you carry out tasks with precision.

## Contents

The Petzl company, a family's passion .....	4
How to choose a Petzl headlamp.....	10
Practical and effective .....	12
For hazardous areas .....	16
Performance headlamps .....	18
Compact, durable headlamps .....	24
Ultra-compact headlamps .....	30
Accessories .....	38

**PETZL.COM**

At Petzl.com, find the complete Petzl product range and all related advice, reports and contact information for retailers in your country.

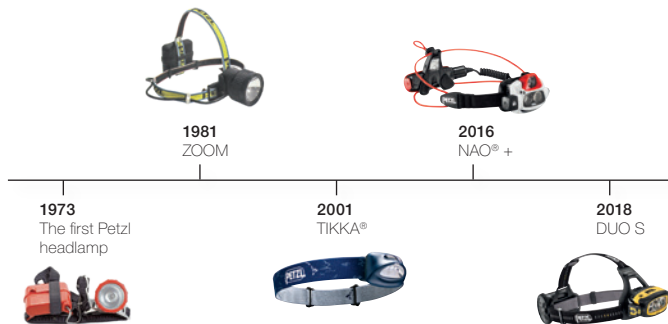
## The expertise of a family business

The Petzl brand on a product has always represented the commitment of the Petzl family to produce the best tools for its users. The adventure began with Fernand Petzl's passion for caving, a passion to which he dedicated his talents as a craftsman. Petzl expertise began to grow with the design and crafting of solutions for ascending, descending, belaying and moving about in the dark. In 1970, the first "Fernand Petzl" brand products were produced in a workshop in Saint-Nazaire-Les Eymes, Isère, France. The Petzl company was created in 1975 and has grown into an international company that now employs over 800 people. Since its beginnings, it has preserved its family legacy and values: remaining independent and in control of its own decisions, developing a long-term vision, prioritizing people above all, and embracing its commitment to quality. Today, a family council, with Paul Petzl as president, ensures the continuity of the company.



## A pioneering business

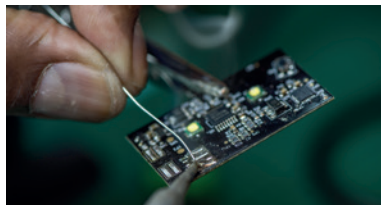
To attain the inaccessible, you need to know how to reinvent yourself. Since the development of the first rope ascenders and descenders, which laid the foundation for rope progression, Petzl has been at the forefront of change and the emergence of new techniques. As proof of this dynamic activity, over 700 patents have been registered since 1970. These advances always result from a dialogue with the user, in order to understand his/her expectations and to provide the elements s/he needs. Petzl has always remained true to this method.



Headlamps: over forty years of innovation

## Expertise and dedication to quality

For over 40 years, Petzl has built on its expertise in the design and manufacture of products for verticality and lighting. Today, Petzl designs, produces and distributes millions of products around the world. Building a Petzl product requires expertise in a wide range of materials - textiles, metals, plastics - as well as in specific technologies: plastics processing, sewing, injection molding, forging, LEDs, electronics... This expertise allows us to design equipment that meets both the needs of professionals and the technical requirements for its use: resistance to impacts, abrasion, extreme temperatures...



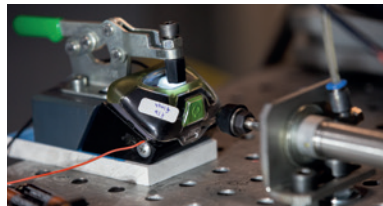
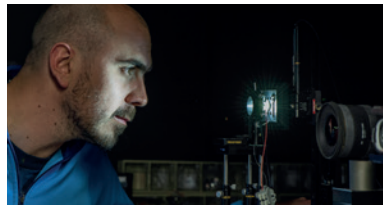
## Design

The Petzl research department in Crolles, France, integrates all the fields related to product design: mechanical, textile, electronic, optical, computing and prototyping. Starting at the design and prototype phases, the reliability of the product and user safety are continually evaluated, with a strong focus on risks to the user.



## Testing

In Crolles, Petzl has labs dedicated to testing verticality products and headlamps. These tests often go above and beyond the required standards to help validate product reliability and user safety. Examples of tests: dynamic fall tests, impact resistance, cyclic testing, performance, headlamp beam quality and burn times. They are complemented by testing in the field for ergonomics and reliability.





## Production and inspection

Petzl's production sites are based in Crolles, Eybens, and Rotherens, France, and in Rawang, Malaysia. This production infrastructure is complemented by long-term partnerships with key suppliers in Europe and Asia. Our purchasing and quality control teams work closely with suppliers to guarantee a standard of product reliability and quality that meets our strict requirements. During the manufacturing phase, quality control is present at every step of the production chain. It combines automated and human inspections.



Head office and manufacturing in Crolles  
Manufacturing in Rotherens, Eybens and Rawang



## Distribution

Petzl distributes products to more than fifty countries via a distribution network, subsidiaries and agents around the world.



- Petzl subsidiaries and agents: Austria, Benelux, Denmark, Finland, France, Germany, Italy, Norway, Spain, Sweden, Switzerland, UK, USA
- Petzl distributors



Salt Lake City, Petzl America

### **Performance headlamps**

Durable and powerful, they are designed for intensive use in industry, maintenance and inspection. They feature the FACE2FACE function, and are certified ATEX (except DUO S).

Industry  
Maintenance  
Work at height  
Inspection

### **Compact, durable headlamps**

Headlamps designed for frequent use, for the energy, networks, building, and maintenance markets. Certified ATEX or HAZLOC.

Industry  
Energy and networks  
Construction  
Maintenance

### **Ultra-compact headlamps**

Practical, lightweight headlamps, for occasional to frequent use, for professionals working at concerts and shows, in workshops, on small maintenance jobs...

Shows and concerts  
Workshops  
Light maintenance



DUO S [1 100 lm]



DUO Z1 [360 lm]



Pack de 5 DUO Z1



DUO Z2 [430 lm]



PIXA Z1 [100 lm]



PIXA 3R [90 lm]



PIXA 3 [100 lm]



PIXA 2 [80 lm]



PIXA 1 [60 lm]

NEW



SWIFT RL PRO  
[900 lm]

NEW



TACTIKKA CORE  
[450 lm]

NEW



TACTIKKA +RGB  
[350 lm]

NEW



TACTIKKA +  
[350 lm]

NEW



TACTIKKA  
[300 lm]

NEW



TACTIKKA ADAPT  
[300 lm]



e+LITE  
[30 lm]

## REACTIVE LIGHTING

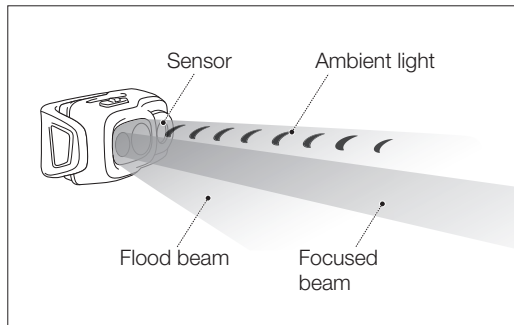


### Intelligent lighting for greater convenience and performance

This exclusive technology, developed by Petzl, instantly provides the right lighting at the right time, without any need for manual operation. Burn time is thus optimized, and the user can engage in his or her activity with peace of mind.

REACTIVE LIGHTING technology offers:

- intelligent lighting
- hands-free lighting for greater convenience and performance
- longer burn time



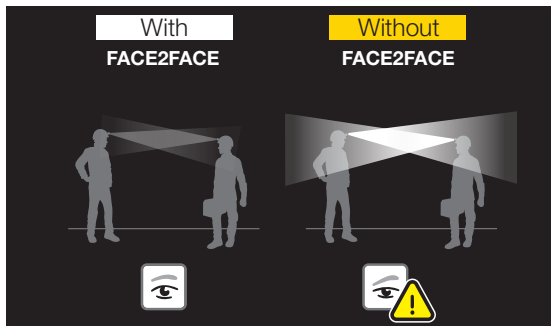
*Available on the SWIFT RL PRO headlamp*

## FACE2FACE function

---

### **Come face-to-face without blinding each other, for better teamwork**

Once activated, the FACE2FACE function triggers a sensor that detects other DUO headlamps within 8 meters and automatically dims the lighting if they face each other. The light returns to its original intensity once the other headlamp is no longer in its line of sight.



*Available on DUO Z1, DUO Z2 and DUO S headlamps.*

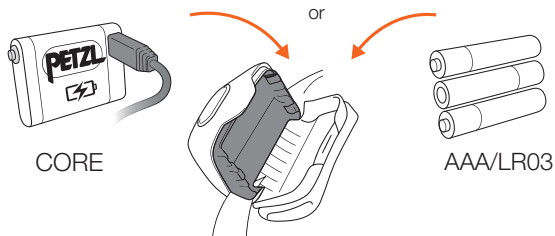
## HYBRID CONCEPT



### The choice of the best energy source for the need

The HYBRID CONCEPT construction allows Petzl's compact headlamps to run on either the CORE rechargeable battery or three AAA/LR03 batteries, without an adapter.

- CORE rechargeable battery is an economical solution for frequent and/or intensive use
- AAA/LR03 batteries for occasional use, with very long burn time

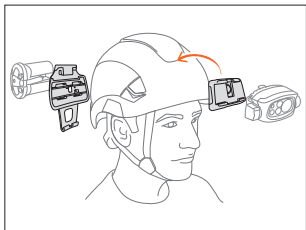


*Available on TACTIKKA CORE, TACTIKKA +RGB, TACTIKKA +, TACTIKKA and TACTIKKA ADAPT headlamps.*

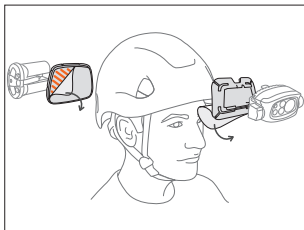
# Multiple ways to wear them

## Compatible with all helmet types

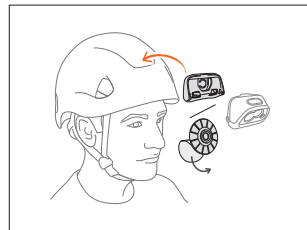
All Petzl headlamps are designed to be worn on the head or a helmet, while allowing for tilting of the headlamp:



- on Petzl helmets, using their mounting plates



- on other helmets, using adhesive plates, available as accessories



- TACTIKKA ADAPT, the ready-to-go solution that adapts to any type of helmet





ATEX



HAZLOC

If an explosion hazard is identified in an environment, the hazardous areas are classified as areas at risk, depending on the prevalence and type of combustible, gas or dust. All of the materials used in these zones must conform with current regulations for this type of zone (ATEX or HAZLOC).

### Classification of ATEX/HAZLOC zones

Explosive atmosphere	Gas type combustible		Dust type combustible	
	ATEX	HAZLOC	ATEX	HAZLOC
Permanent or long-term	ZONE 0	Class I Div 1	ZONE 20	Class II Div 1
Occasional	ZONE 1	Class I Div 1	ZONE 21	Class II Div 1
Accidental	ZONE 2	Class I Div 2	ZONE 22	Class II Div 2

Many Petzl headlamps are designed specifically for protection against electrical sparks, overheating, and dust intrusion in conformity with ATEX (European directive) or HAZLOC (North American directive) regulations.

## Petzl headlamps for work in hazardous areas



ATEX



HAZLOC



BATTERIES INCLUDED



RECHARGEABLE

		ATEX	HAZLOC	BATTERIES INCLUDED	RECHARGEABLE
DUO Z1		ATEX zone 1/21 II 2 GD Ex ib IIB T4 Gb IIIB T135° C Db Ambient temperature: -20° C to +40° C	-	-	•
DUO Z2		ATEX zone 2/22 II 3 GD Ex ic IIB T4 Gc IIIB T135° C Dc Ambient temperature: -20° C to +40° C	-	•	-
PIXA Z1		ATEX zone 1/21 II 2 GD Ex ib IIB T4 Gb IIIB T135° C Db Ambient temperature: -20° C to +40° C	-	•	-
PIXA 3R		ATEX zone 2/22 II 3 GD Ex ic IIB T4 Gc IIIC T135° C Dc Ambient temperature: -30° C to +40° C	-	-	•
PIXA 3		ATEX zone 2/22 II 3 G Ex nA ic IIB T4 Gc, II 3 D Ex tc IIIC T135° C Dc Ambient temperature: -30° C to +40° C	-	•	-
		-	HAZLOC Class I Div 2 Class II Div 2	•	-
PIXA 2		ATEX zone 2/22 II 3 G Ex nA ic IIB T4 Gc, II 3 D Ex tc IIIC T135° C Dc Ambient temperature: -30° C to +40° C	-	•	-
		-	HAZLOC Class I Div 2 Class II Div 2	•	-
PIXA 1		ATEX zone 2/22 II 3 G Ex nA ic IIB T4 Gc, II 3 D Ex tc IIIC T135° C Dc Ambient temperature: -30° C to +40° C	-	•	-
		-	HAZLOC Class I Div 2 Class II Div 2	•	-

## Performance headlamps



Excavating underground galleries

© 2019 - Petzl Distribution - Rémi Flament - SAS Michel Besson



## DUO S

Ultra-powerful with 1100 lumens in BOOST mode, the DUO S is the most powerful rechargeable headlamp in the Petzl line. It is multi-beam, and has five lighting modes, making it adaptable to every situation: close-range work, proximity, movement, rapid movement and long-range vision. Featuring the FACE2FACE anti-glare function, the DUO S headlamp allows those working in a group to face each other without blinding one another, to work together more effectively. It can be worn on VERTEX and STRATO helmets, thanks to the included mounting plates.

# 1100

LUMENS



CONSTANT  
LIGHTING



MAX  
DISTANCE



MAX  
BURN TIME



LARGE



MIXED



FOCUSED



LOCK  
UNLOCK



RECHAR-  
GEABLE



WATER-  
PROOF



WEIGHT



ATEX

**Face2Face**  
 FUNCTION

## DUO Z1

DUO Z1 is a headlamp with a maximum 360 lumens of lighting in BOOST mode that runs on a rechargeable battery. It is multi-beam, and has four lighting modes, making it adaptable to every situation: close-range work, proximity lighting, movement and long-range vision. Featuring the FACE2FACE anti-glare function, the DUO Z1 headlamp allows those working in a group to face each other without blinding one another, enabling them to work more effectively together. It can be worn on VERTEX and STRATO helmets, thanks to the included mounting plates. It meets ATEX zone 1/21 (II 2 GD Ex ib IIB T4 Gb IIIB T135° C Db) certification requirements for work in hazardous areas.

# 360

LUMENS


 CONSTANT  
 LIGHTING

**115 m**

 MAX  
 DISTANCE

**23 h**

 MAX  
 BURN TIME


LARGE



MIXED



FOCUSED


 LOCK  
 UNLOCK

 RECHAR-  
 GEABLE

**IP67**

↓ -1m

 WATER-  
 PROOF

**370 g**

WEIGHT



ATEX

Face2Face  
FUNCTION

## Pack of 5 DUO Z1

Pack of five DUO Z1 headlamps - comes with charging rack that allows simultaneous charging of five batteries.

# 360

LUMENS



CONSTANT  
LIGHTING



115 m

MAX  
DISTANCE



23 h

MAX  
BURN TIME



LARGE



MIXED



FOCUSED



LOCK  
UNLOCK



RECHAR-  
GEABLE



IP67

-1m

WATER-  
PROOF



370 g

WEIGHT



ATEX

**Face2Face**  
 FUNCTION

## DUO Z2

The DUO Z2 headlamp provides a powerful 430 lumens in BOOST mode, and runs on regular batteries. It is multi-beam, and has four lighting modes, making it adaptable to every situation: close-range work, proximity lighting, movement and long-range vision. Featuring the FACE2FACE anti-glare function, the DUO Z2 headlamp allows those working in a group to face each other without blinding one another, enabling them to work more effectively together. It can be worn on VERTEX and STRATO helmets, thanks to the included mounting plates. It meets ATEX zone 2/22 (II 3 GD Ex ic IIB T4 Gc IIIB T135° C Dc) certification requirements for work in hazardous areas.

# 430

LUMENS


 CONSTANT  
 LIGHTING


120 m

 MAX  
 DISTANCE


15 h 30

 MAX  
 BURN TIME


LARGE



MIXED



FOCUSED


 LOCK  
 UNLOCK

 BATTERIES  
 INCLUDED


IP67

-1m

 WATER-  
 PROOF


360 g

WEIGHT





Wind turbine maintenance operations, France  
© 2019 - Petzl Distribution - Vuedici.org - RES - Parc éolien de Marsanne

Compact, durable headlamps



Repositioning of the braces of a tower crane, France  
© 2019 - Petzi Distribution - Vuedici.org - Integral - Bateg -  
Tour Trinity - Cro&Co Architecture



ATEX

## PIXA<sup>®</sup> Z1

The PIXA Z1 headlamp is durable and versatile. The multi-beam adapts to all situations: close-range work, movement, and long-range vision. It meets ATEX zone 1/21 (II 2 GD Ex ib IIB T4 Gb IIIB T135° C Db) certification requirements for work in hazardous areas.

# 100 LUMENS



STANDARD  
LIGHTING



MAX  
DISTANCE



MAX  
BURN TIME



LARGE



MIXED



FOCUSED



LOCK  
UNLOCK



BATTERIES  
INCLUDED



WATER-  
PROOF



170 g

WEIGHT



ATEX

## PIXA<sup>®</sup> 3R

The PIXA 3R headlamp is a durable, rechargeable headlamp suitable for frequent use by professionals. The multi-beam adapts to all situations: close-range work, movement, and long-range vision. CONSTANT LIGHTING technology: brightness does not gradually decrease as the batteries are drained. It meets ATEX zone 2/22 (II 3 GD Ex ic IIB T4 Gc IIIC T135° C Dc) certification requirements for work in hazardous areas.

# 90 LUMENS

CONSTANT  
LIGHTING90 m  
MAX  
DISTANCE11 h 30  
MAX  
BURN TIME

LARGE



MIXED



FOCUSED

LOCK  
UNLOCKRECHAR-  
GEABLEIP67  
↓ -1m  
WATER-  
PROOF145 g  
WEIGHT



## PIXA<sup>®</sup> 3

The PIXA 3 headlamp is durable and versatile. The multi-beam adapts to all situations: close-range work, movement, and long-range vision. CONSTANT LIGHTING technology: brightness does not decrease gradually as the batteries are drained. Available in two versions: ATEX zone 2/22 (II 3 GD Ex nA ic IIB T4 Gc tc, IIIC T135° C Dc) or HAZLOC Class I Div 2 and Class II Div 2.

# 100 LUMENS



CONSTANT  
LIGHTING



90 m

MAX  
DISTANCE



26 h

MAX  
BURN TIME



LARGE



MIXED



FOCUSED



LOCK  
UNLOCK



BATTERIES  
INCLUDED



IP67

-1m

WATER-  
PROOF



160 g

WEIGHT



ATEX



Hazloc

HAZLOC

## PIXA<sup>®</sup> 2

The PIXA 2 is a durable headlamp offering lighting that allows the user to work comfortably on tasks close at hand or to move around safely. CONSTANT LIGHTING technology: brightness does not decrease gradually as the batteries are drained. Available in two versions: ATEX zone 2/22 (II 3 GD Ex nA ic IIB T4 Gc tc, IIIC T135° C Dc) or HAZLOC Class I Div 2 and Class II Div 2.

# 80 LUMENS

CONSTANT  
LIGHTING55 m  
MAX  
DISTANCE26 h  
MAX  
BURN TIME

MIXED

LOCK  
UNLOCKBATTERIES  
INCLUDEDIP67  
↓ -1m  
WATER-  
PROOF160 g  
WEIGHT



## PIXA<sup>®</sup> 1

The PIXA 1 is a durable headlamp offering lighting that allows the user to work comfortably on tasks close at hand. CONSTANT LIGHTING technology: brightness does not decrease gradually as the batteries are drained. Available in two versions: ATEX zone 2/22 (II 3 GD Ex nA ic IIB T4 Gc tc, IIIC T135° C Dc) or HAZLOC Class I Div 2 and Class II Div 2.

# 60 LUMENS



CONSTANT  
LIGHTING



MAX  
DISTANCE



MAX  
BURN TIME



LARGE



LOCK  
UNLOCK



BATTERIES  
INCLUDED



WATER-  
PROOF



WEIGHT





Maintenance inside a water treatment facility  
© 2019 - Petzl Distribution - Vuedici.org



NEW  
2020

**Reactive**  
LIGHTING

## SWIFT RL PRO

Designed for the workshop, small maintenance jobs, or concerts and shows, the SWIFT RL PRO rechargeable headlamp offers 900-lumen brightness. With REACTIVE LIGHTING technology, a sensor analyzes the ambient light and automatically adjusts headlamp brightness to user requirements. It also has red lighting to ensure stealth. SWIFT RL PRO is intuitive, with a single button for easy control over all lamp functions. The five-level gauge allows precise monitoring of the battery charge level. The lamp is compatible with Petzl helmets, and mounting accessories allow it to be attached to any kind of helmet.

**900**  
LUMENS



STANDARD  
LIGHTING



MAX  
DISTANCE  
150 m



MAX  
BURN TIME  
100 h



MIXED



FOCUSED



RED  
LIGHTING



LOCK  
UNLOCK



RECHAR-  
GEABLE  
USB



WATER  
RESISTANT  
IPX4



WEIGHT  
123 g



NEW  
2020

Hybrid  
CONCEPT

## TACTIKKA® CORE

Designed for the workshop, small maintenance jobs, or concerts and shows, the TACTIKKA CORE headlamp offers 450-lumen brightness. It is multi-beam, guaranteeing comfortable proximity lighting and strong performance lighting for rapid movement and distance vision. It also has red lighting to ensure stealth. TACTIKKA CORE comes with the CORE rechargeable battery and is also compatible with three AAA/LR03 batteries (not included), thanks to its HYBRID CONCEPT design. Mounting accessories allow the lamp to be attached to any kind of helmet.

**450**  
LUMENS



STANDARD  
LIGHTING



90 m  
MAX  
DISTANCE



130 h  
MAX  
BURN TIME



LARGE



MIXED



RED  
LIGHTING



RED  
STROBE



RECHAR-  
GEABLE



IPX4  
WATER  
RESISTANT



77 g  
WEIGHT



NEW  
2020



**Hybrid**  
CONCEPT

## TACTIKKA<sup>®</sup> +RGB

Designed for the workshop, small maintenance jobs, or concerts and shows, the TACTIKKA + RGB offers 350-lumen brightness and a mixed beam, for comfortable proximity lighting and rapid movement. It also has red, green or blue lighting to ensure stealth. TACTIKKA +RGB comes with 3 standard batteries and is also compatible with the CORE rechargeable battery, thanks to its HYBRID CONCEPT design. Mounting accessories allow the lamp to be attached to any kind of helmet.

# 350 LUMENS



STANDARD  
LIGHTING



MAX  
DISTANCE  
90 m



MAX  
BURN TIME  
160 h



MIXED



RGB  
LIGHTING



RGB  
STROBE



BATTERIES  
INCLUDED



IPX4  
WATER  
RESISTANT



85 g  
WEIGHT



NEW  
2020



Hybrid  
CONCEPT

## TACTIKKA<sup>®</sup> +

Designed for the workshop, small maintenance jobs, or concerts and shows, the TACTIKKA + offers 350-lumen brightness and a mixed beam, for comfortable proximity lighting and rapid movement. It also has red lighting to ensure stealth. TACTIKKA + comes with 3 standard batteries and is also compatible with the CORE rechargeable battery, thanks to its HYBRID CONCEPT design. Mounting accessories allow the lamp to be attached to any kind of helmet.

**350**  
LUMENS



STANDARD  
LIGHTING



90 m  
MAX  
DISTANCE



160 h  
MAX  
BURN TIME



MIXED



RED  
LIGHTING



RED  
STROBE



BATTERIES  
INCLUDED



IPX4  
WATER  
RESISTANT



85 g  
WEIGHT



NEW  
2020



**hybrid**  
CONCEPT

## TACTIKKA®

Designed for the workshop, small maintenance jobs, or concerts and shows, the TACTIKKA headlamp offers 300-lumen brightness and a flood beam for comfortable proximity lighting. It also has red lighting to ensure stealth. TACTIKKA comes with three standard batteries and is also compatible with the CORE rechargeable battery, thanks to its HYBRID CONCEPT design. Mounting accessories allow the lamp to be attached to any kind of helmet.

# 300 LUMENS



STANDARD  
LIGHTING



65 m  
MAX  
DISTANCE



120 h  
MAX  
BURN TIME



LARGE



RED  
LIGHTING



RED  
STROBE



BATTERIES  
INCLUDED



IPX4  
WATER  
RESISTANT



82 g  
WEIGHT

NEW  
2020

## TACTIKKA<sup>®</sup> ADAPT

TACTIKKA ADAPT is a ready-to-go lighting solution for use on any type of helmet. It consists of a TACTIKKA headlamp without a headband, a FIXATION TACTIKKA clip mount, and a KIT ADAPT adhesive mount.

# 300

LUMENS

STANDARD  
LIGHTINGMAX  
DISTANCE  
65 mMAX  
BURN TIME  
120 h

LARGE

RED  
LIGHTINGRED  
STROBEBATTERIES  
INCLUDEDIPX4  
WATER  
RESISTANTWEIGHT  
70/73 g



## e+LITE<sup>®</sup>

Ultra-lightweight and highly compact, the e+LITE emergency headlamp is the one to always have with you. Thanks to its carry case, it is always ready to use and can be stored with its batteries for ten years in a backpack, a vest, or an emergency kit, or used as a back-up headlamp. Its white or red, continuous 30-lumen lighting or strobe lighting helps you to be seen. The whistle integrated in the elastic headband allows the user to signal an emergency. Weighing only 26 grams, e+LITE is an ideal emergency headlamp.

# 30

LUMENS



STANDARD  
LIGHTING



MAX  
DISTANCE



MAX  
BURN TIME



LARGE



RED  
LIGHTING



WHITE / RED  
STROBE



LOCK  
UNLOCK



WHISTLE



BATTERIES  
INCLUDED



WATER-  
PROOF



26 g

WEIGHT



Excavating underground galleries  
© 2019 - Petzl Distribution - Rémi Flament -  
SAS Michel Besson





## ACCU 2 DUO Z1

Rechargeable battery for DUO Z1 headlamp, usable in ATEX zone

---



## ACCU 2

Rechargeable battery for DUO S headlamp

---



## 5 DUO Z1 charging rack

Charging rack, which allows simultaneous charging of five DUO Z1 headlamp batteries

---



## ACCU 2 DUO Z1 charger



## Quick charger

Quick wall charger for ACCU 2 rechargeable batteries

---



## Extension cord for headlamp

Extension power cable for DUO S headlamp

---

NEW  
2020



## ACCU SWIFT RL PRO

Rechargeable battery for SWIFT RL PRO headlamp

---



## Rechargeable battery for PIXA<sup>®</sup> 3R

930 mAh Lithium-Ion Polymer rechargeable battery

---



## CORE

Rechargeable battery compatible with Petzl HYBRID headlamps



## PRO ADAPT

Adhesive accessory for mounting a DUO headlamp on any type of helmet

---



## PIXADAPT

Accessory for mounting a PIXA or SWIFT RL PRO headlamp on a helmet

---



## RUBBER

Rubber headband for PIXA or SWIFT RL PRO headlamp, compatible with all helmet types

---



## FIXATION TACTIKKA<sup>®</sup>

Kit for mounting a TACTIKKA, TACTIKKA +, TACTIKKA +RGB or TACTIKKA CORE type headlamp on a STRATO or VERTEX helmet

---



## KIT ADAPT

Kit for mounting a TIKKA type headlamp onto a helmet



## POCHE PIXA<sup>®</sup> & SWIFT RL PRO

Carry pouch for PIXA and SWIFT RL PRO headlamps

---



## SHELL L

Carrying case for ultra-compact headlamps

---

#### Warning

The activities depicted are inherently dangerous. All users must be trained and competent in the use of the equipment for these activities.

#### Guarantee

3 to 10 year guarantee, depending on the model, covering parts and labor only for manufacturing defects. Normal wear and tear and inappropriate use are excluded from the guarantee. To take advantage of the guarantee, the defective part must be returned to us.

Product photos  
Studio Kalice  
Aurélie Jeannette  
Yannick Siegel

Printing  
Comptoir des idées

Petzl 38920 Crolles - F  
ISO 9001 Certified  
Company  
© Petzl 2019



Access  
the  
inaccessible®

PETZL.COM

